

## YUKI LAMP – a welcoming table lamp with an uplifting twist

A joyful design gesture and a characteristic expression. Soft atmospheric light and a timeless material. Those are key elements of Signe Hytte's new lamp design for MAZO.



A lamp's most prominent function is not just to provide light, but to create new spaces within a room. It can accentuate a mood, spread coziness, and create a homely feel, when it lights up from its place inside a bookshelf, a windowsill, a bedside table, or the corners of a living room. MAZO and the Danish designer Signe Hytte wanted to form exactly that type of a mood creating lamp with YUKI. An expressive design that is welcoming and graceful, crafted in glass from head to toe, letting its entire body light up with a warm glow.

»We are advocates of not hiding any details and never using a material that is not part of the narrative or expression of the design. With the YUKI lamp, Signe Hytte masters just that, by using the glass both functionally and aesthetically«, explains Magnus Sangild, designer, and partner at Mazo, and elaborates: »Some of the masters of furniture making once said that a chair must be just as beautiful underneath as it is on top. We must be able to turn it and understand the design in every detail. We can do that with the YUKI lamp, because the material, the colors and function work together in all parts of the design«.

With its 27.5cm height, the glass lamp is equally delicate and expressive, charming, and strong. A bit like winter's snow - solid and fragile, and in constant motion in the wind. In a way, snow was a key inspiration in the design of YUKI, which is the Japanese word for snow.



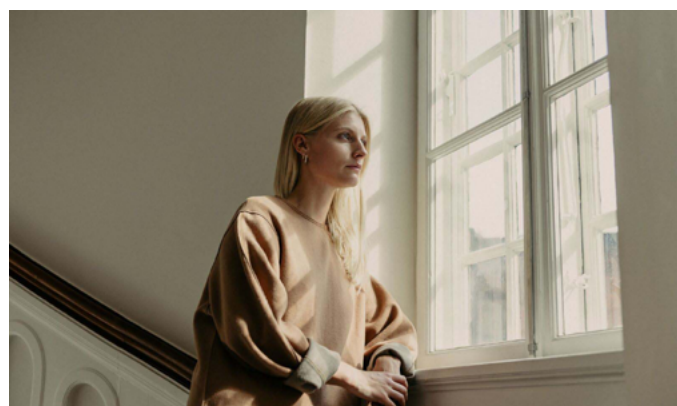


»The silhouette of the lampshade forms a soft curve that runs from the top with a small "bend". I really studied that specific curve, to let it create an uplifting expression that adds a sense of movement to the design – it is full of personality and has a happy vibe that I really love«, explains Signe Hytte about the look of the YUKI lamp.

In addition to a version in classic opal white, the YUKI lamp is available with a blue base and an olive-colored base. »In Denmark, we have a strong tradition of designing glass lamps and working creatively with the material. For me glass was ideal for YUKI as it gave the possibility of creating a monochrome as well as a two-colored lamp in the same material. We worked with soft and dusty colors that can be placed in many contexts, which contributes to the lamp's functionality«, says designer Signe Hytte.

## About Signe Hytte

Signe Hytte is an educated furniture designer, who has previously worked as Head of Design for the Danish design brand &Tradition. In addition, she is known for her product design for Danish and international brands such as New Works, MENU, WOOD and others. She designs functional products that people can use in everyday life and draws inspiration from cultural and artistic movements rather than passing trends. Signe Hytte studied Aesthetics and Culture at Aarhus University and later graduated from TEKO Design and Copenhagen Business School. With a meticulous attention to detail, each project is an expression of a feeling, a dream, or an idea, as Hytte always aims to create design that tell a story.



## Specifications

Designed by	Signe Hytte
Year	2021
Materials	Opaque Glass, Socket E14 and EU plug
Colours	Opaque White, Blue & Olive
Dimensions	H: 26.5cm / 10.4in W: 26cm / 10.2in

## Press Info

PR & Marketing	press@mazo-design.com
Phone	+45 2849 3929
Address	Ryesgade 19, 2200 Cph N
Website	www.mazo-design.com
Image Bank	www.flickr.com/mazodesign
Instagram	@mazo_design